


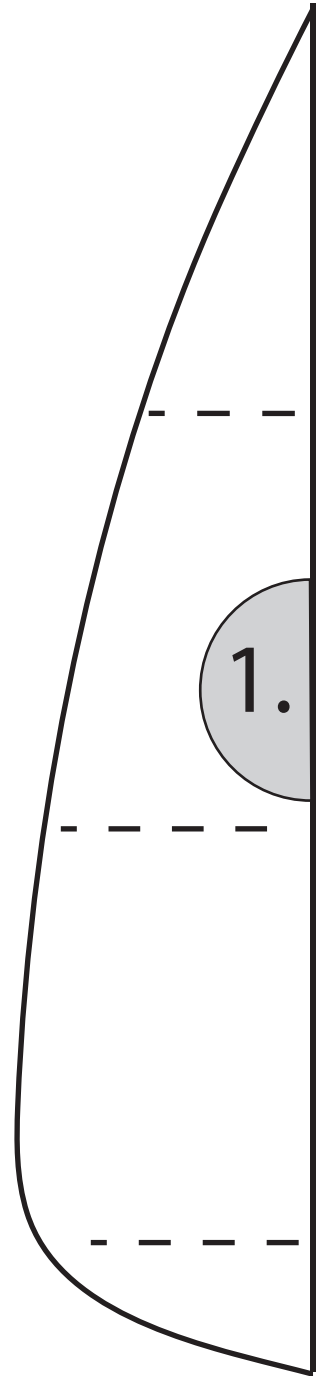
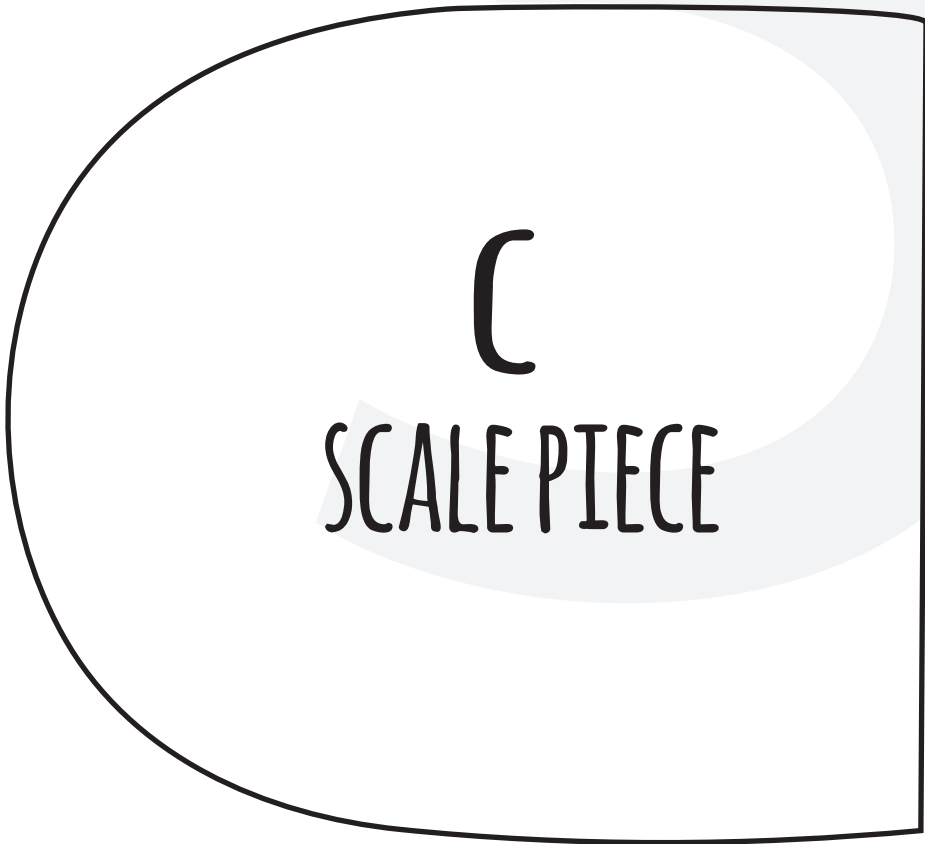
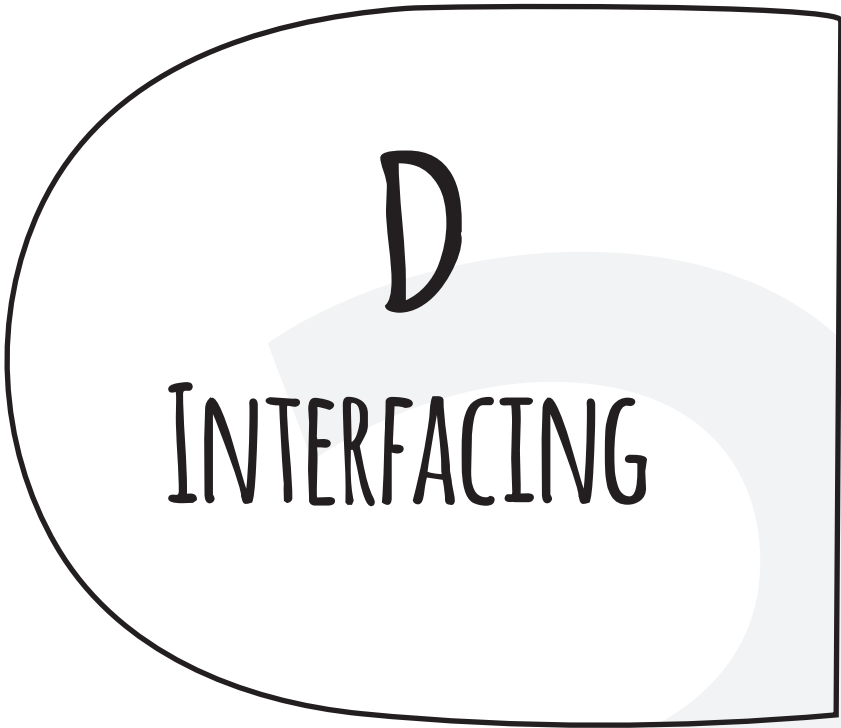


A
HEAD PIECE

CUT 1

FOLD





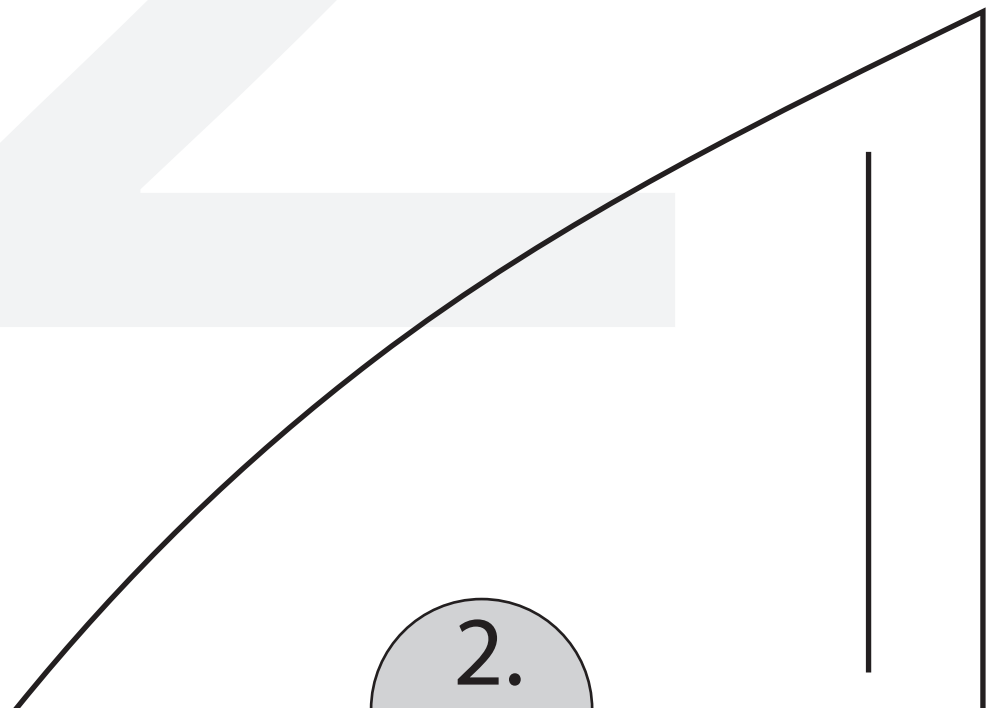
SUMMER FISH PLACEMAT

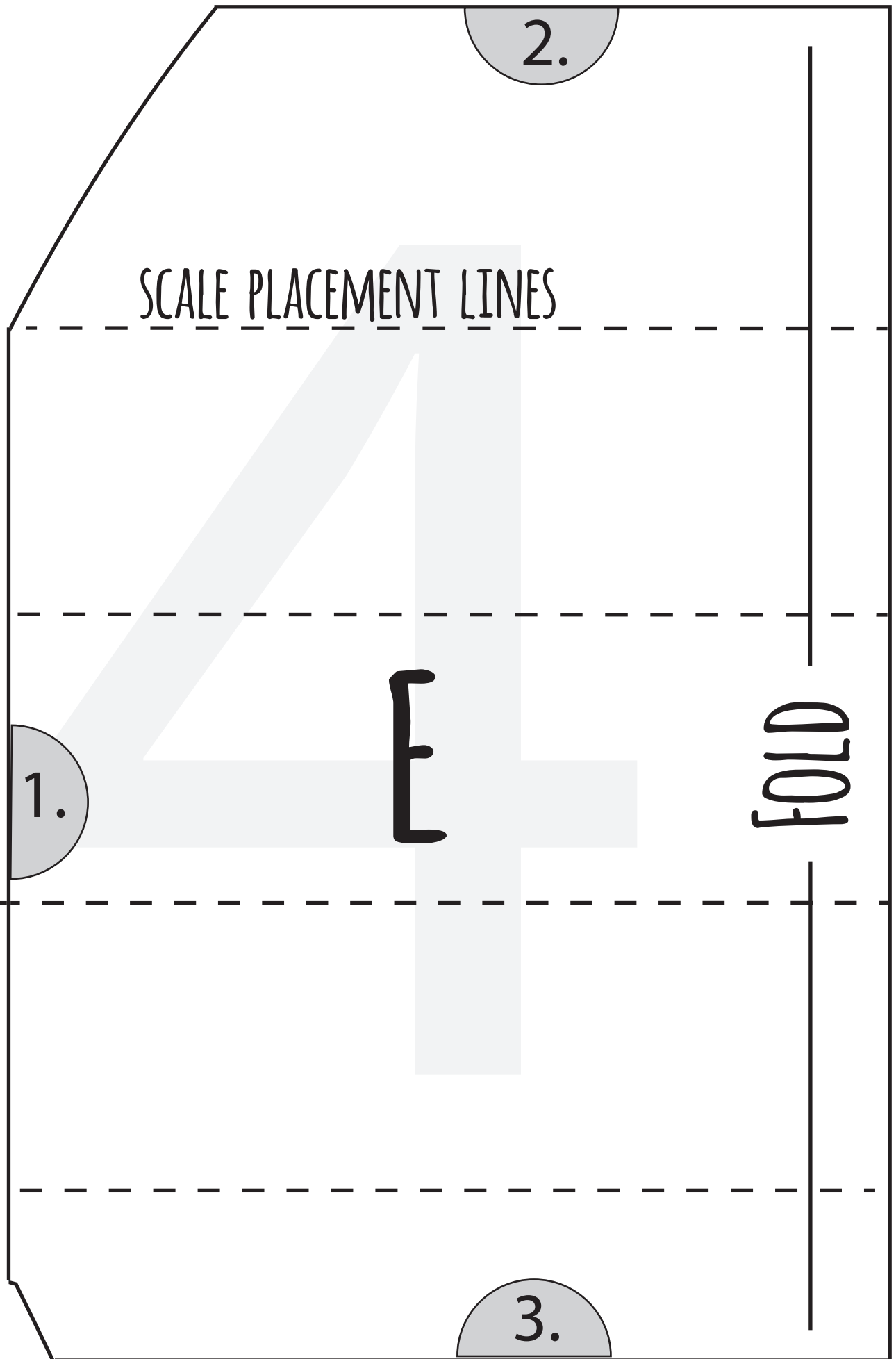
PATTERN PIECE "E"

- CUT 1 UNDERLAYMENT FABRIC
- CUT 1 BACKGROUND FABRIC
- SHOULD MEASURE 22 1/4 IN. ALONG FOLD

----- PLACEMENT LINES FOR BOTTOM OF SCALES

Catalina Home Grown Free Pattern: Summer Fish Placemat





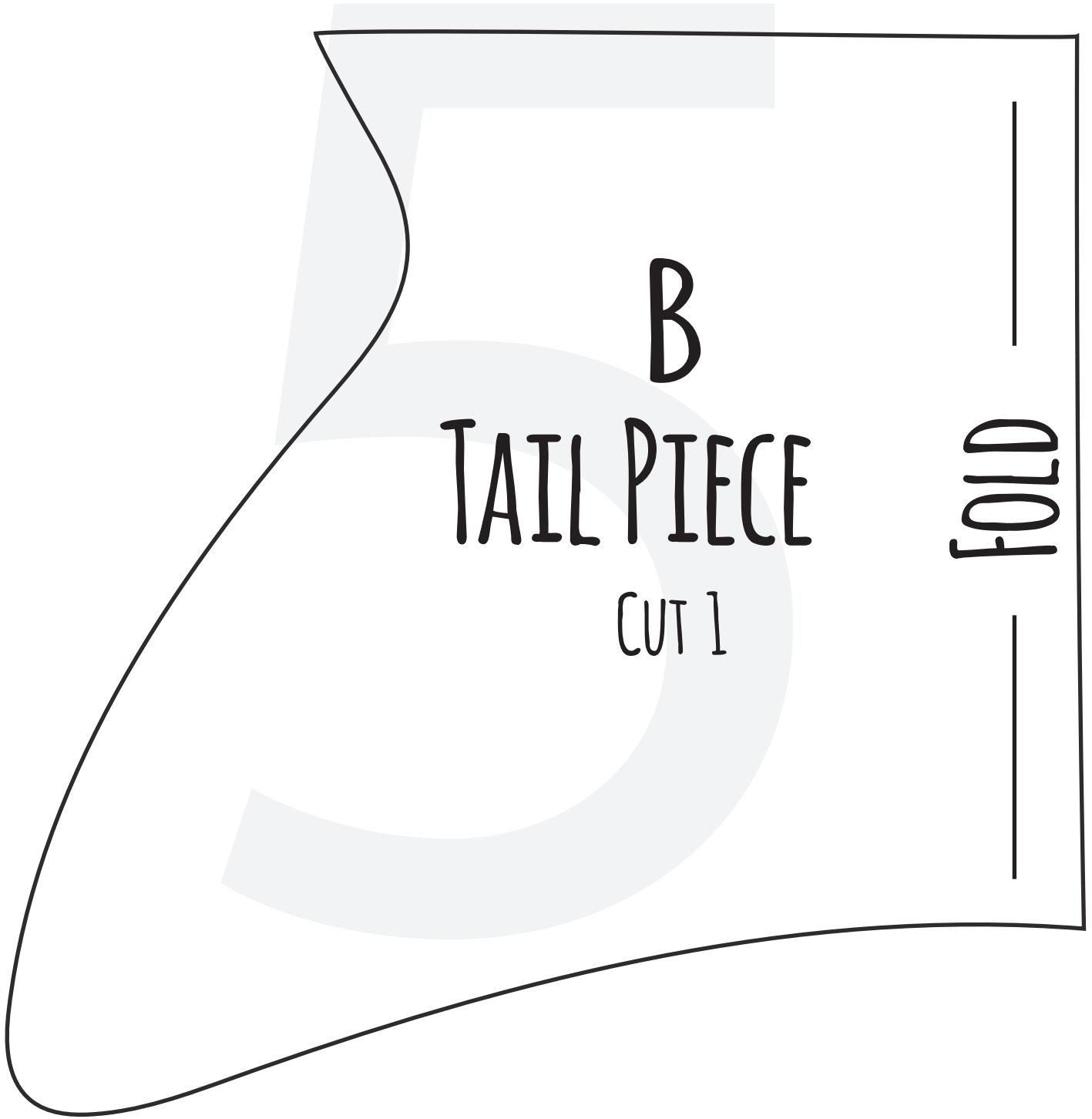
SCALE PLACEMENT LINES

1.

2.

FOLD

3.

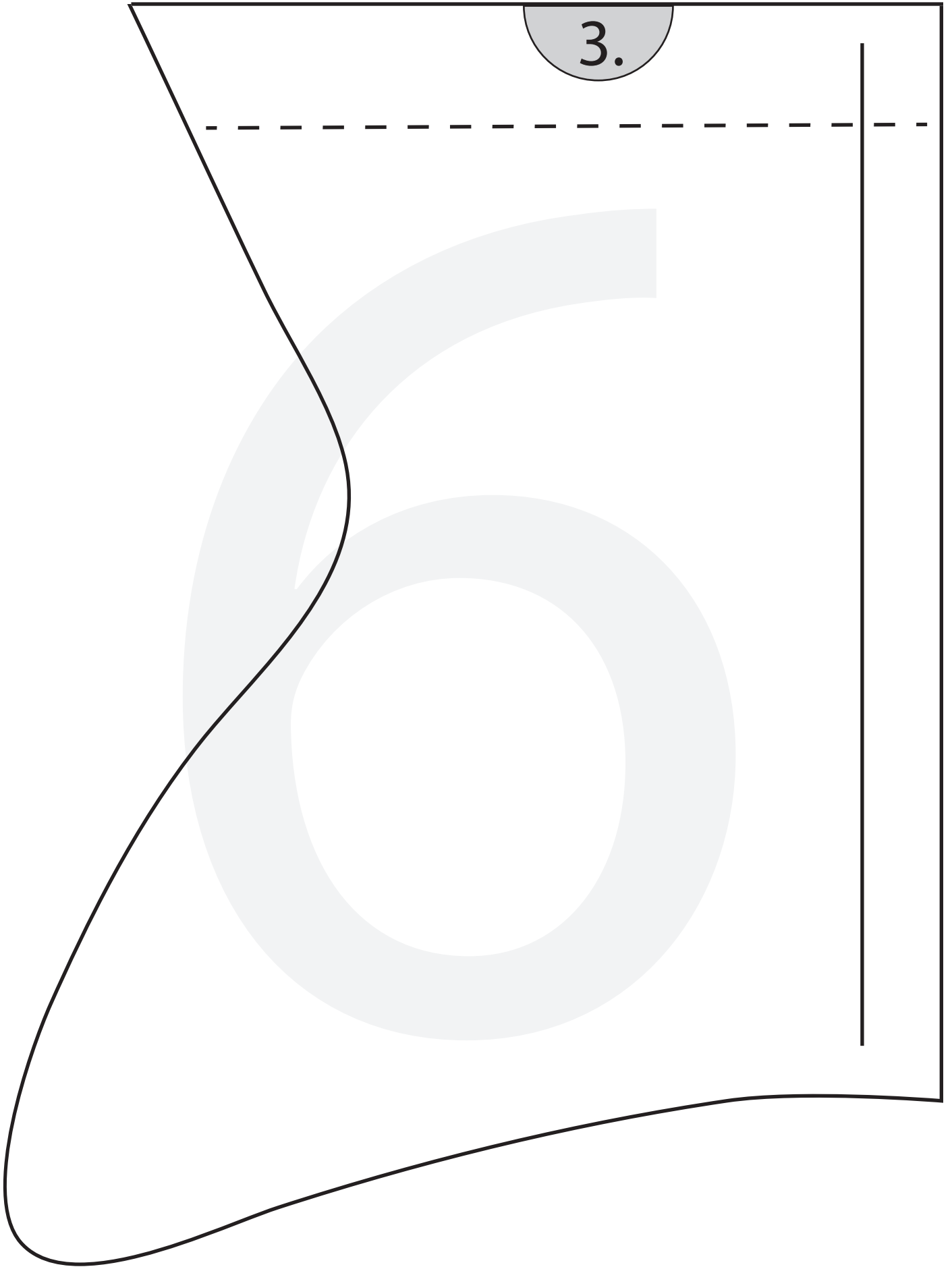


B

TAIL PIECE

CUT 1

FOLD



3.

Free Summer Fish Placemat



CATALINA HOME-GROWN FREE PATTERN

TAG YOUR MAKES AT #CATALINAHOMEGROWN



Directions:

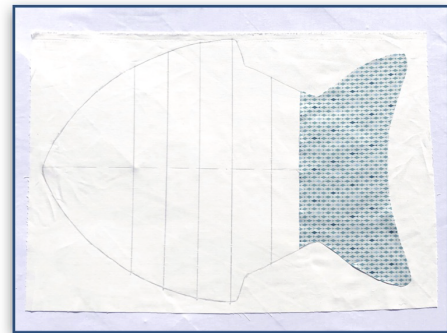
Materials List:

Heat and Bond® Lite
Spray Baste
Pellon® Fusible Batting
Cotton Fabric
Pencil
Toothbrush

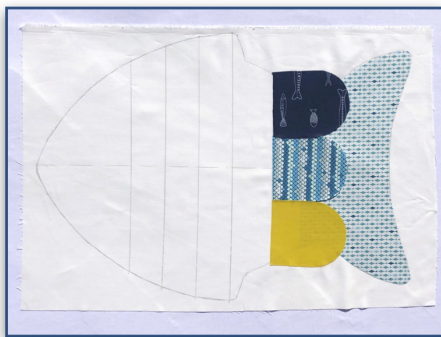
Fabric Requirements to Make 2:

1/2 yd for fin and tail
3/4 yd for backing
3/4 yd underlayment (base fabric)
3/4 yd Pellon fusible batting
Scraps for fish scales

1. Trace pattern piece E on underlayment fabric (white, muslin or cream)
2. Transfer dotted lines onto the underlayment using a pencil (DO NOT use a pen/pencil that disappears with heat)
3. Cut out pattern pieces A and B of coordinating fabrics
4. Spray baste B to the underlayment lined up to the tail of the fish



5. Cut pattern piece C from coordinating fabrics (21 per placement) Use scraps or fat quarters
6. Cut pattern piece D from Heat and Bond
7. Heat set D to C lining up from the bottom of the scales. There will be about 1/4" boarder around the arc of the scales that will not have Heat and Bond.



8. Starting at the top dotted line towards the head of the fish, press the first scale to the middle of that line. Line up the next scales on either side of the first

Free Summer Fish Placemat



CATALINA HOME-GROWN FREE PATTERN

TAG YOUR MAKES AT #CATALINAHOMEGROWN



Directions:

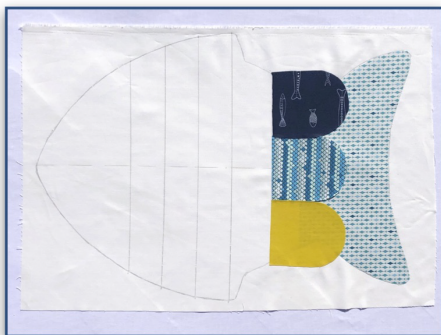
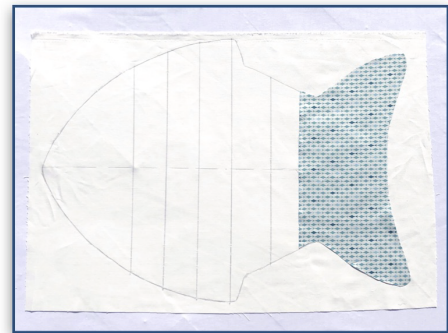
Materials List:

Heat and Bond® Lite
Spray Baste
Pellon® Fusible Batting
Cotton Fabric
Pencil
Toothbrush

Fabric Requirements to Make 2:

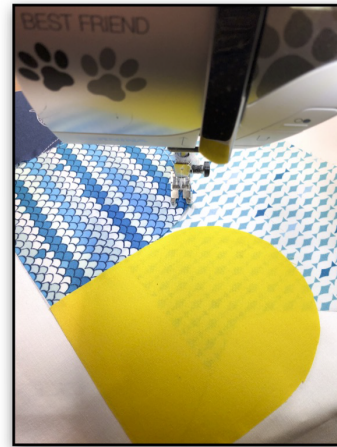
1/2 yd for fin and tail
3/4 yd for backing
3/4 yd underlayment (base fabric)
3/4 yd Pellon fusible batting
Scraps for fish scales

1. Trace pattern piece E on underlayment fabric (white, muslin or cream)
2. Transfer dotted lines onto the underlayment using a pencil (DO NOT use a pen/pencil that disappears with heat)
3. Cut out pattern pieces A and B of coordinating fabrics
4. Spray baste B to the underlayment lined up to the tail of the fish
5. Cut pattern piece C from coordinating fabrics (21 per placement) Use scraps or fat quarters
6. Cut pattern piece D from Heat and Bond
7. Heat set D to C lining up from the bottom of the scales. There will be about 1/4" boarder around the arc of the scales that will not have Heat and Bond.



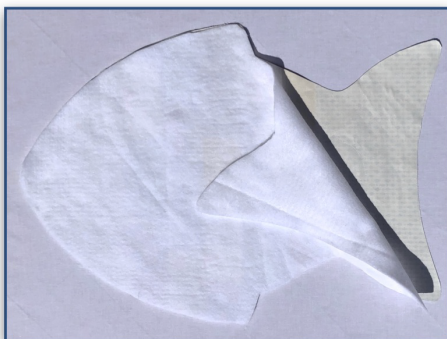
8. Starting at the top dotted line towards the head of the fish, press the first scale to the middle of that line. Line up the next scales on either side of the first

9. Following the shape of the scales, sew 1/4" in from the outer edge of the scales and in one fluid motion in a cloud formation for the first row



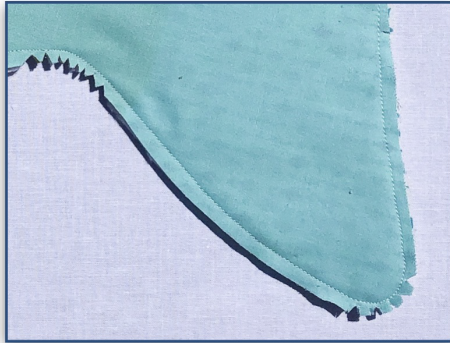
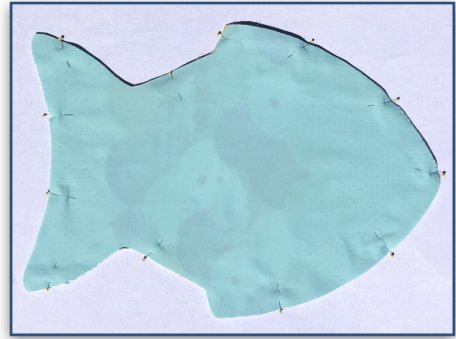
10. Move to the next line and lay out the scales in the same manner but at the center point of the fish, you will butt 2 scales together and then move outward from the middle
11. Repeat step 9
12. Continue steps 10 and 9 for each row until the last line of scales are done

13. Spray baste the head of the fish to the underlayment overlapping the very first line of scales
14. Repeat Step 9 for the head scales
15. Once scales and all parts are sewn and fused to the underlayment fabric, trim to the shape of the pattern fish (pattern piece E)



16. Cut out pattern piece E of fusible batting and fuse to the back of the fish with iron

17. Layer the fish top (with batting fused to the back) and backing fabric, right sides together
18. Sew a 1/4" seam all around the fish, leaving approximately 2" opening for turning in the fin area



19. Clip all corners once sewn being careful not to clip the actual seam. Clipping well will ensure a nice smooth edge once turned

20. Turn fish right side out, finger press and then press well with iron

21. Topstitch around the whole fish approximately 1/4"



22. Topstitch around the sewing line of the head scales, and also over the sewing line of the very first set of fin scales just to hold your layers of the placemat together

23. Hand stitch the opening closed



24. Use a tooth brush to fray the edges of the scales to add texture to the fish
25. Ta-Da you are finished! Enjoy! Be sure to tag us at [#catalinahomegrown](https://www.instagram.com/catalinahomegrown) so we can see what you make!